

Perlator® Faucet Aerator - 1.8 gpm Flow Restricted Junior Size



flow, stop and go®

Features and Benefits

- ▶ Watercolours® design: Color coding to identify flow rate and stream pattern.
- ▶ Patented construction provides a splash-free stream, well-aerated and soft to the touch.
- ▶ Integrated anti-liming honeycomb replaces conventional wire mesh screens prone to lime build up.
- ▶ Anti-clogging dome screen filters sediment and particles.
- ▶ Available housing finishes: chrome, polished brass, & brushed nickel.
- ▶ Roll marked with statutory marks or laser for vandal proof housings.

Certifications

ANSI/NSF®-61-372
ASME A112.18.1M and CSA B125
Meets **CALGreen** requirements

Thread & Part Number

Part #	Designation	Thread Size
11 665	Insert only	
11 670	Junior male	13/16"-27
11 680	Junior female	3/4"-27
11 658	Junior dual thread	13/16"-27 x 3/4"-27
11 674	Junior male vandal proof	13/16"-27
11 684	Junior female vandal proof	3/4"-27

Other product combinations available.

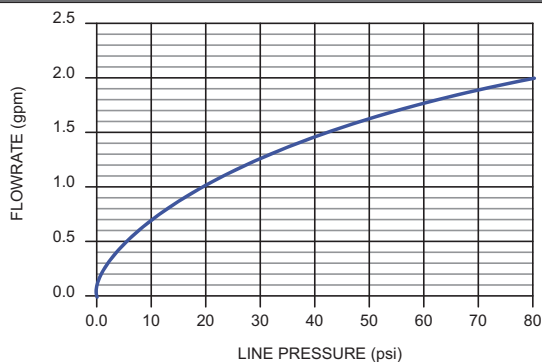
Packaging:

Inserts	1 pc (bag), 6 pcs (bag), 50 pcs (bag)
Jr. male/female	1 pc (bag), 6 pcs (tube), 50 pcs (tray)
Jr. dual thread	1 pc (bag), 6 pcs (clamshell), 50 pcs (tray)
Jr. vandal proof male/female	1 pc (bag), 6 pcs (tube), 50 pcs (tray)

Color Code

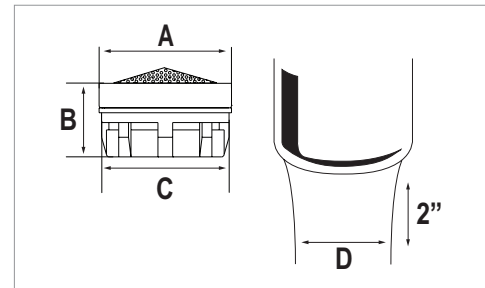
Dome	Ring	Basket
Brown	Natural	Dark Gray

Flow Rate Curve



NEOPERL®, Inc., Waterbury, CT • Tel: 203-756-8437 • Fax: 203-574-2107 • www.neoperl.com

January 2021 - Information subject to change without notice.



Dimensions

No	mm	In
A	18.20	.717
B	10.21	.402
C	17.40	.685
D	≈ 11	≈ 7/16

Housings

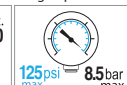
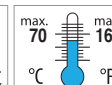
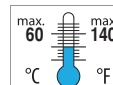


Technical Data

Materials: Body Acetal
Washer EPDM

Continuous

Short-term (5 minutes max.)
Per ASME A112.18.1 testing requirements.



SFFA-5