



# Q Series IP65 Rated High Bay

## Product Specifications



The Q Series IP65 Rated High Bay features a 2FT lightweight extruded aluminum body and up to 28,500 lumens, resulting in a versatile solution for endless applications. The included mounting hardware makes the Q Series IP65 Rated High Bay quick to install and will provide a long-lasting, durable light source for years to come. This waterproof, up to 50°C (122°F) temperature rated, high bay is the perfect light for extreme applications.

## Reasons to choose the Q Series IP65 Rated High Bay from TCP

- Lightweight, quick install construction
- High temperature rating of up to 50°C (122°F)
- Standard frosted lens for glare control
- No shadows for smooth, even lighting
- IP65 rated
- 0-10V smooth dimming
- 250W or 400W HID equivalent
- 50,000 hour rated life
- Wide 120 degree beam spread
- Optional controls available
- Includes 2-foot power cord

## Ideal Applications

- High ceiling locations
- Commercial settings
- Industrial settings
- Water sports arenas
- Warehouses
- Other wet applications



## Applications

The Q Series IP65 Rated High Bay is a versatile solution for endless wet location applications. It's ideal for high ceiling, commercial, and industrial settings. With its lightweight extruded aluminum body and included mounting hardware, the Q Series IP65 Rated High Bay by TCP is quick to install and will provide a long-lasting, durable light source for years to come.

## Features

- Lightweight, quick install construction
- Standard frosted lens for glare control
- No shadows for smooth, even lighting
- IP65 wet location rated
- 0-10V smooth, no-flicker dimming
- 250W or 400W HID equivalent
- Long 50,000 hour rated life
- Wide beam spread due to LED design providing a clean cutoff
- Optional battery backup available

## Hardware Included

- 2 tong hangers
- 5' jack chains
- 2' pre-wired cord

## Installation

Before hanging installation, please consult your local ordinances and building codes.



### Listings

cULus Listed  
RoHS Compliant  
NSF Rated  
DLC 5.1 Standard

### Warranty

Five year limited warranty against defects in manufacturing.

### Ambient Temperature Ratings

Wattage	All Models (Min)	Standard (Max)	NSF Rated (Max)
110W	-40°F (40°C)	122°F (50°C)	113°F (45°C)
165W	-40°F (40°C)	122°F (50°C)	104°F (40°C)
220W	-40°F (40°C)	113°F (45°C)	95°F (35°C)

## Catalog Ordering Matrix

Example: QHB2UZDA250KIP

FAMILY	LENGTH	VOLTAGE	CONTROLS	LUMEN PACKAGE (Power) <sup>1,2</sup>	COLOR TEMPERATURE	WET LOCATION RATING	SPECIAL RATING
<b>QHB</b> - Q Series High Bay	<b>2</b> - 2 foot	<b>U</b> - 120-277V	<b>ZD</b> - 0-10V Dimming	<b>A2</b> - 14,000L (110W) <b>A3</b> - 21,300L (165W) <b>A4</b> - 28,500L (220W)	<b>40K</b> - 4000K <b>50K</b> - 5000K	<b>IP</b> - IP65 Wet Location	<b>Blank</b> - No Special Rating <b>NSF</b> - NSF Rated

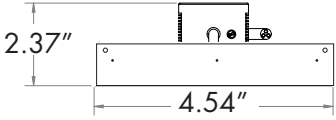
<sup>1</sup> Approximate lumen output. Actual performance may vary based on CCT, options selected and end use application

<sup>2</sup> Actual wattage may differ by +/- 10%

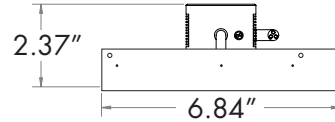
## Field Installed Accessories

- BILDAIP65EM30 - 30W IP65 Wet Location remote mount battery backup
- QHB2WGUARD1 - Wire Guard for 110W Model - Not compatible with NSF version
- QHB2WGUARD2 - Wire Guard for 130W-220W Models - Not compatible with NSF version
- QHB2SMOUNT1 - 110W IP65 Surface Mount Kit - Compatible with NSF version only
- QHB2SMOUNT2 - 130W-220W Surface Mount Kit - Compatible with NSF version only

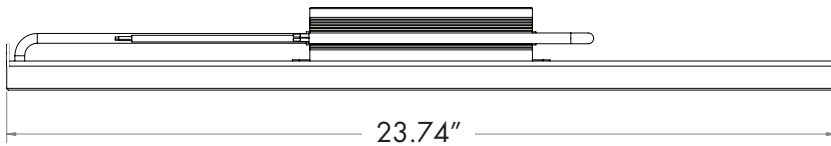
## Wireline Dimensions



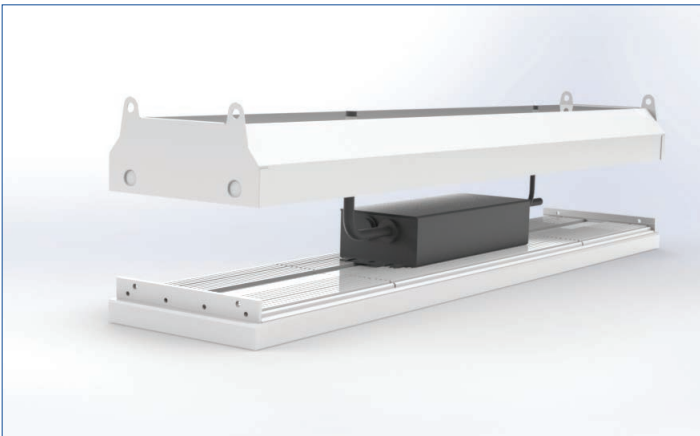
QHB2UZDA2\*\*KIP



QHB2UZDA3\*\*KIP & QHB2UZDA4\*\*KIP



## NSF Rating Details



NSF rated cover is factory installed when adding "NSF" to the end of the item #. QHB2UZDA250KIPNSF shown.



Surface mount bracket is compatible with NSF version. QHB2UZDA250KIPNSF with QHB2SMOUNT1 shown.

# TECHNOLOGY CAST IN A BEAUTIFUL LIGHT

For over 20 years, TCP has been designing, developing and delivering energy-efficient lighting into the market. Thanks to our cutting-edge technology and manufacturing expertise, we have shipped billions of high quality lighting products. With TCP, you can count on a lighting product that is designed to meet the needs of the market - that transforms your surroundings and envelopes you in warmth - lighting that generates beauty with every flip of the switch.

Sales:

Date:

Model:

Project:

Rep:

Catalog Number:

Type:

Notes:



For more information on the quality and care TCP can deliver, call us at **800.324.1496** or visit [tcp.com](http://tcp.com)

325 Campus Dr. | Aurora, Ohio 44202 | P: 800.324.1496 | F: 877.487.0516