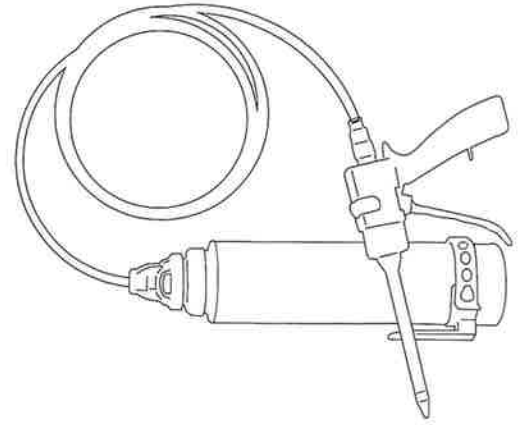
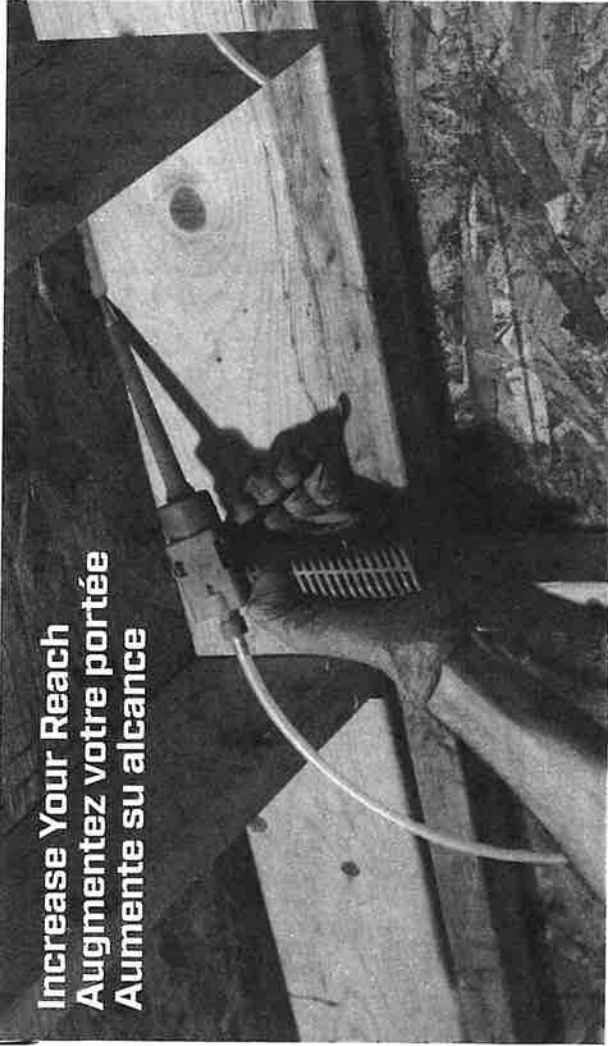


DAP SHARPSHOOTER
EXTENDTM

FOAM APPLICATOR | APLICADOR DE ESPUMA | APPLICATEUR DE MOUSSE

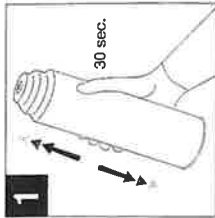
Increase Your Reach
Augmentez votre portée
Aumente su alcance



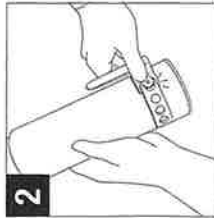
Usage Instructions
Instructions d'utilisation
instrucciones de uso

Preparation & Application

IMPORTANT: Wear gloves, eye protection and work clothes during preparation and application.



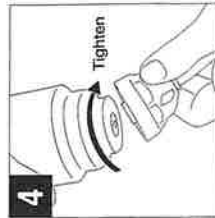
1 Shake can vigorously for 30 seconds.



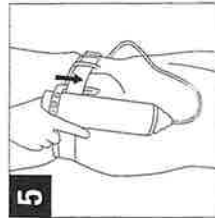
2 **OPTIONAL:** Install belt loop by wrapping the rubber strap snugly around the base of can and securing loop.



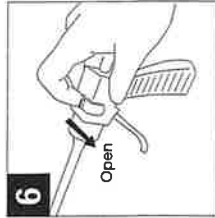
3 Make sure safety switch is engaged/closed (slide toward handle).



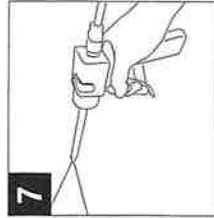
4 Holding the can adapter in one hand, use the other hand to twist the upside down foam can tightly onto adapter.



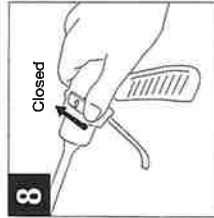
5 Hold can upside down or **OPTIONAL:** Clip can upside down on belt or pants pocket.



6 Disengage/open the safety switch (slide away from handle).



7 Practice dispensing foam on scrap material by pulling trigger. You are now ready to begin your project.



8 When finished dispensing foam, re-engage safety switch (slide toward handle).

To Store For Short-term Reuse

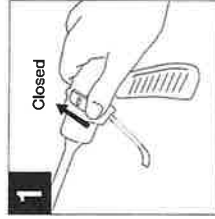


Wipe any access foam from tip with rag. Store can in upright position between 60 and 90°F for up to one week.

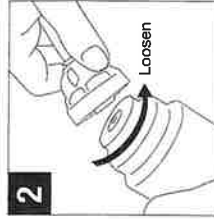
Clean & Storage For Long-term Reuse

IMPORTANT: Wear gloves, eye protection and work clothes.

Requires DAP Foam Cleaner (or similar, sold separately)



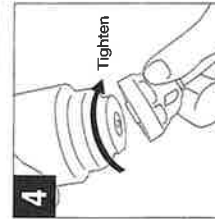
1 Make sure safety switch is engaged/closed (slide toward handle).



2 Holding can away and above a waste container, carefully remove can from can adapter.



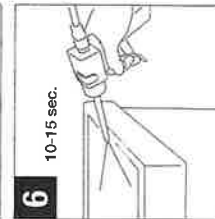
3 Use spray foam cleaner nozzle to clean/remove any foam residue from the inside of the adapter.



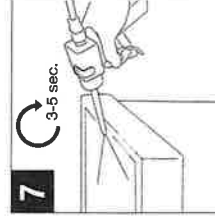
4 Holding the can adapter in one hand, use the other hand to twist the upside down cleaner can tightly onto adapter.



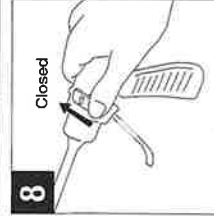
5 Disengage/open the yellow safety switch (slide away from handle).



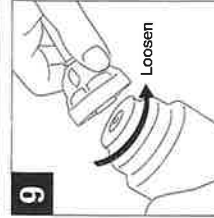
6 Pull trigger and flush applicator & hose into a waste container for approx 10-15 seconds or until most foam has cleared and the cleaner has started to emerge. Stop for 15 seconds



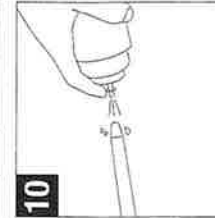
7 Continue flushing until the hose is clear of foam residue.



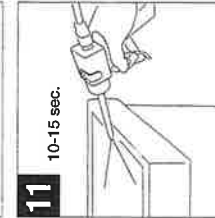
8 Reengage/close safety switch (slide toward handle).



9 Carefully remove foam cleaner can from can adapter.



10 Use foam cleaner nozzle to clean any foam residue from the applicator tip.



11 Purge any remaining cleaner from the hose into a waste container.