

J-UFO12[®]



FEATURES AND SPECIFICATIONS

Construction

- Die-cast Aluminum housing with powder coat finish.
- UV Stabilized polycarbonate lens.
- Wattage and CCT selectable.
- Complete accessories for option

Electrical

- Lens cover: 110° ,90° ,
- 120-277V; 277-480V
- Lens IK grade: IK08 for PC lens,
- LED source: Lumileds

Applications

- used for warehouse, factory, airport, other high bay applications.

Installation

- Hook, Yoke

Distribution

- 90°

Listing

- ETL&DLC

Warranty

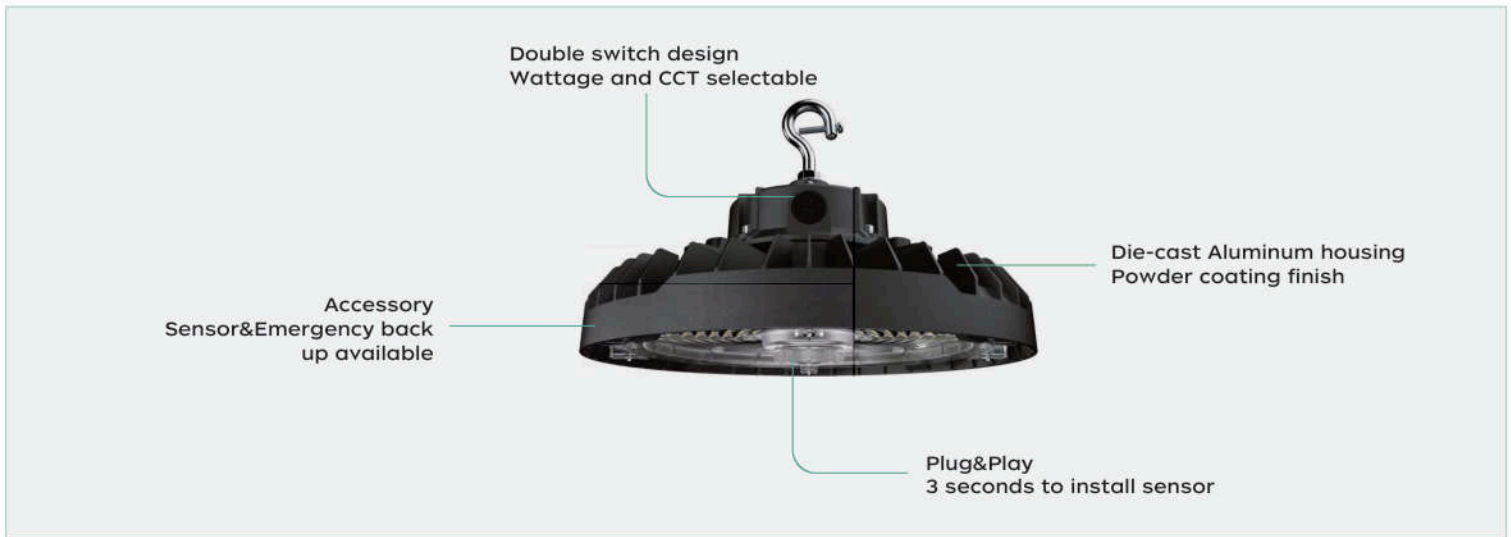
- 5 years warranty

Specs at a Glance	* Nominal Wattage (Switchable)			
Configuration	J-UFO12-150W/120W/100W L-(30/40/50)K-Y	J-UFO12-240W/200W/150W L-(30/40/50)K-Y	J-UFO12-150W/120W/100W H-(30/40/50)K-Y	J-UFO12-240W/200W/150W H-(30/40/50)K-Y
CCT (K)	3000K/4000K/5000K Color Tunable			
Wattage (W)	100W/120W/150W wattage adjustable	150W/200W/240W wattage adjustable	100W/120W/150W wattage adjustable	150W/200W/240W wattage adjustable
Lumens (lm)	100W=14000lumens 120W=16800lumens 150W=21000lumens	150W=21000lumens 200W=28000lumens 240W=33600lumens	100W=14000lumens 120W=16800lumens 150W=21000lumens	150W=21000lumens 200W=28000lumens 240W=33600lumens
Efficacy (LPW)	Up to 140lm/w			
CRI	>80			
Input Voltage	AC120-277V		AC277-480V	
Operating Temp	"-30 to 50°C"			
Certifications	ETL&DLC			
Warranty	5 year warranty			

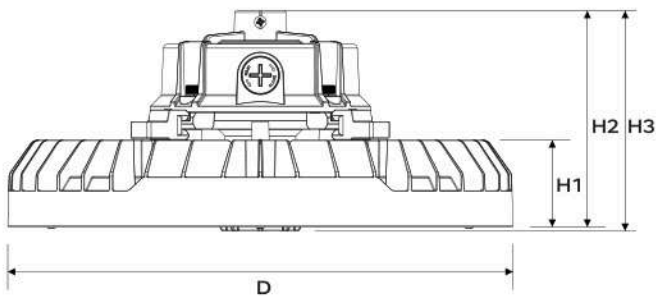
Ordering information

Model	Description
JEN-UFO11-150/120/100W -H-TCP(XX)-Y	UFO highbay , Power Switchable 100W/120W/150W, Color Switchable 3000K/4000K/5000K 120-277VAC
J-UFO12-240W/200W/150W -L-(30/40/50)K-Y	UFO highbay , Power Switchable 150W/200W/240W, Color Switchable 3000K/4000K/5000K 120-277VAC
J-UFO12-150W/120W/100W -H-(30/40/50)K-Y	UFO highbay , Power Switchable 100W/120W/150W, Color Switchable 3000K/4000K/5000K 277-480VAC
J-UFO12-240W/200W/150W -H-(30/40/50)K-Y	UFO highbay , Power Switchable 150W/200W/240W, Color Switchable 3000K/4000K/5000K 277-480VAC

Detail



Dimensions



Power	D	H1	H2	H3
150W	Ø240mm 9.45"	50mm 1.97"	127mm 5.00"	129mm 5.08"
240W	Ø300mm 11.81"	50mm 1.97"	127mm 5.00"	129mm 5.08"
AC	Cable length Tin plated bare wire head,Exposed length 0.3m			
Control	Tin plated bare wire head,Exposed length 0.3m			

Accessories



PC reflector



Safety rope



U bracket



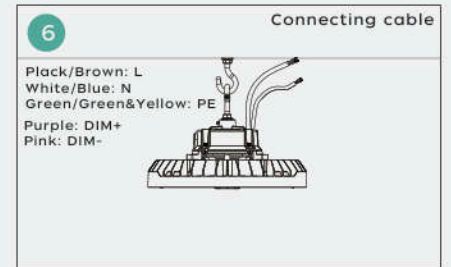
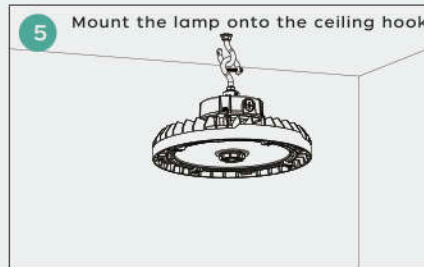
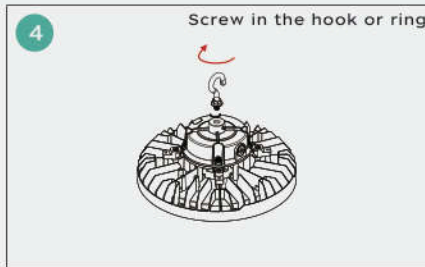
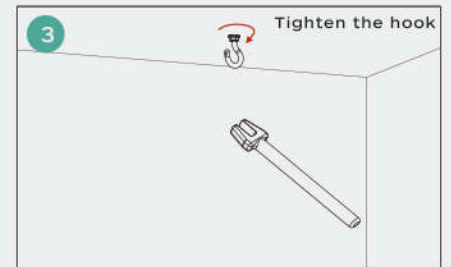
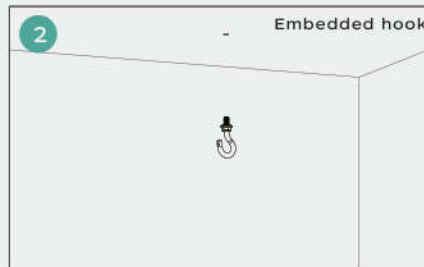
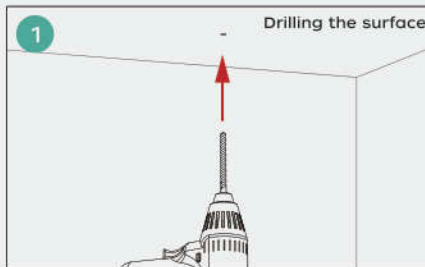
Sensor



Emergency backup

Installation Instruction

Suspension installation with rain or hook



Surface mounting with bracket

- 1 Drilling the surface**
- 2 Embedded with expansion screws seat**
- 3 Tap the expansion screw seat**
- 4 The central shaft screw is connected to the installation interface through the bracket**
- 5 Tighten the center shaft screws**
- 6 Put the screw through the bracket and screw it on the swelling screw seat**
- 7 Tighten the screws**
- 8 Loosen the bracket screws and adjust the lamp to the appropriate angle**
- 9 Connecting cable**

 - Black/Brown: L
 - White/Blue: N
 - Green/Green&Yellow: PE
 - Purple: DIM+
 - Pink: DIM-

Pipe installation (Factory)

- 1 Screw Cross through the converter to connect to the installation interface**

Converters specification can be selected as G11 or G3/4
- 2 Tighten the center shaft screws**
- 3 Align the lamp converter with the threaded pipe orifice**
- 4 Rotate the lamp until it is tightened**
- 5 Tighten the auxiliary screws on the side of the converter**
- 6 Connecting cable**

 - Black/Brown: L
 - White/Blue: N
 - Green/Green&Yellow: PE
 - Purple: DIM+
 - Pink: DIM-



Packing Information

Power	L /inch	W /inch	H /inch	QTY/ctn	G.W./lbs
150W	10	10	6	1	5.7 lbs
240W	12	12	6	1	6.7 lbs

