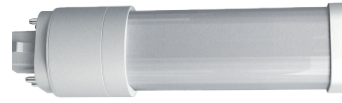




Vertically Mounted



Horizontally Mounted

6W REPLACES
13W&18W CFL
50% Energy Savings

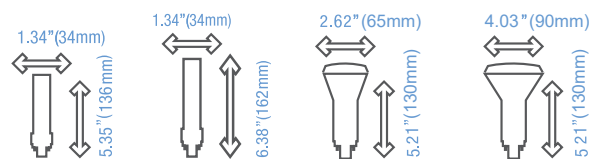
8.5W/9.5W REPLACES
26W CFL
60% Energy Savings



Easily upgrade to LED from fluorescent.

TOPSTAR PLC lamp has been designed and engineered for commercial applications that demand accurate color rendering and high performance. This plug and play direct replacement lamp is compatible with electronic ballasts and requires no rewiring during installation. This lamp features ballast output control technology which allows for high performance on lower powered ballasts. The base of the lamp can be rotated 300° to fit any socket configuration.

- 13W/18W/26W/32W/42W CFL replacement
- Exceptional efficacy 85-95LPW
- Compatible with Electronic Ballasts
- Plug & Play Direct installation
- 2700K / 3000K / 3500K & 4000K CCT
- Extra-long 50 000 hr lifetime
- 5 years warranty
- Rotatable Base, max 300° - Horizontal
- DLC 4.2 Listed - 26W Replacement
- PF>0.9, THD<20%
- Dimmable with dimmable ballast



Ordering Code	Bare Lamp Watt (W)	Initial Lumen *	Base	CRI	Color Temp.	Rated Average life	MOL (in.)	Beam Angle
PLC18HG24Q-8YY-06P-P2-EB	6	620	G24q	82	2700K/3000K/3500K/4000K	50,000	5.35	160
PLC26HG24Q-8YY-09P-P5-EB	8.5	1020	G24q	82	2700K/3000K/3500K/4000K	50,000	6.38	160
** PLC18VSG24Q-8YY-06P-P2-EB	6	620	G24q	82	2700K/3000K/3500K/4000K	50,000	5.21	160
PLC26VSG24Q-8YY-09P-P2-EB	9.5	1020	G24q	82	2700K/3000K/3500K/4000K	50,000	5.21	160

* Initial lumen above is @ 4000K
** No stock in US, special order is available

NOTE: This retrofit kit is for a 4 PIN MOUNT and can replace 13W, 18W, 26W, 32W and 42W CFL lamps with G24q and GX24q bases.

CAUTION –RISK OF FIRE. IF THE LAMP OR LUMINAIRE EXHIBITS UNDESIRABLE OPERATION (BUZZING, FLICKERING, ETC.), IMMEDIATELY TURN OFF POWER, REMOVE LAMP FROM LUMINAIRE AND CONTACT THE MANUFACTURER.

WARNING –Risk of fire or electric shock. LED Retrofit Kit installation requires knowledge of luminaire electrical systems. If not qualified, do not attempt installation. Contact a qualified electrician. Installation should be performed only by a qualified electrician in accordance with the National Electrical Code and relevant local code.

WARNING –Risk of fire or electric shock. Install this kit only in the luminaires that have the construction features and dimensions shown in the photographs and/or drawings and where the input rating of the retrofit kit does not exceed the input rating of the luminaire.