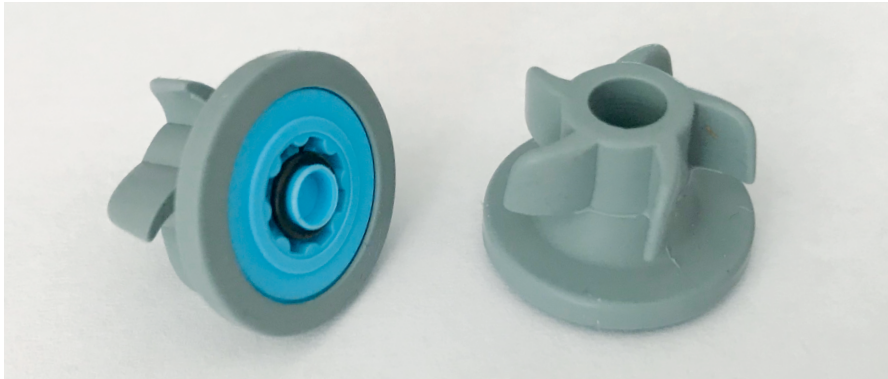


# PCW-02 Washer Flow Regulator for ½" male thread shower handles (and bib/pillar tap tails)

**NO PLUMBING REQUIRED | WATER & ENERGY SAVING | EVEN WATER DISTRIBUTION**

The PCW-02 washer regulator is a washer with dual function: flow regulating and sealing. It's easy to install and therefore perfect for retrofit.

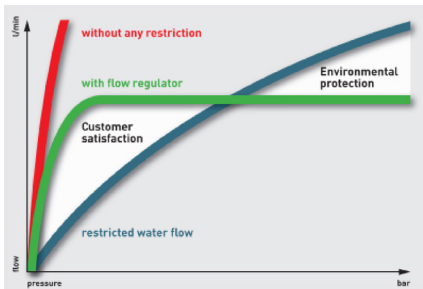
## RP/PCW-02 | Pressure Compensating Washer Regulator



### Features

- **WATER-SAVING**  
a convenient and inexpensive way to save water and energy when taking a shower
- **HIDDEN INSIDE**  
and invisible from the outside (theft-proof)
- **EASY INSTALLATION**  
in any ½" male thread; perfect for retrofit

## Neoperl Pressure Compensating Flow Regulator



Water consumption: as much as necessary (customer satisfaction), but only as little as possible (environmental protection).

### Flow regulators provide a constant & maximum flow rate irrespective of pressure fluctuations

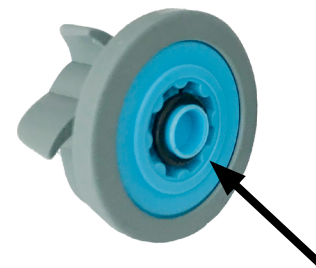
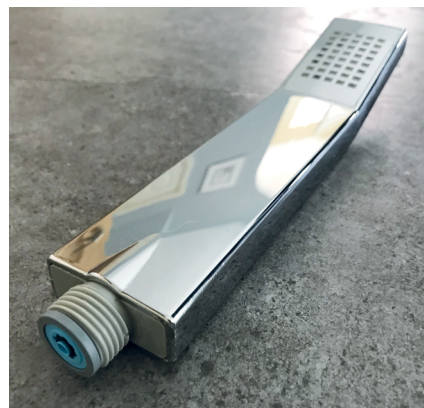
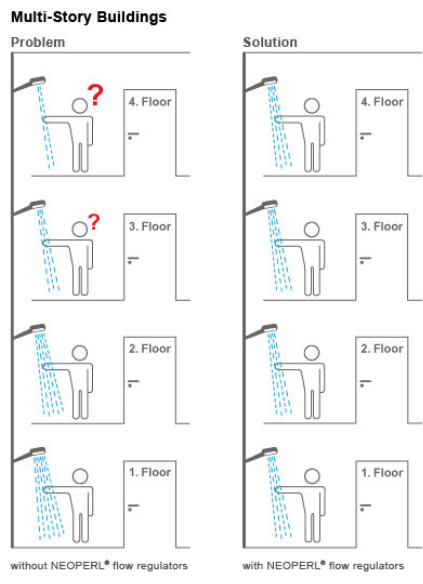
The flow regulator is composed of a **colour-coded body** and a **dynamic o-ring**. The o-ring reacts to pressure change and alters its shape to adjust the amount of water flowing through the flexible gap.

The unique flow regulator technology keeps the flow rate near-constant, independent from the line pressure (e.g. ~6 litres/minute when washing your hands or ~12 litres/minute when taking a shower). The use of flow regulators not only saves a lot of money, but also helps provide an even water distribution.

To meet code and standard requirements flow regulators are inserted into taps, showerheads and shower hand spray etc. In commercial installations flow regulators improve the distribution of water and help save water and energy.

### Operating water pressure 1 Bar to 10 Bar

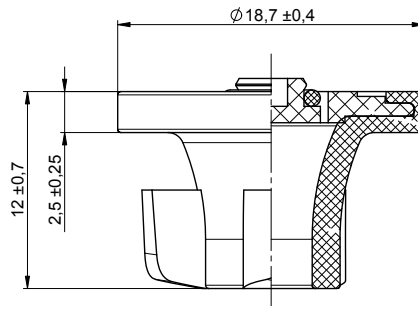
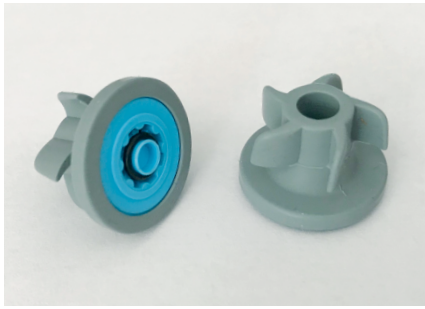
Where flow rates are stated in gallons/min (**gpm max.**) this refers to a US gallon (3.8 litre/min approx.) and the flow rate will not exceed that stated providing the water pressure is correct. Where flow rates are stated in litres/min (**l/min**) this is subject to ±10% deviation.



water flow must be into small internal 'o' ring

## RP/PCW-02 | Pressure Compensating Flow Regulator (1 bar to 10 bar)

The pressure compensating flow regulator produces – by means of the o-ring – an almost constant flow rate regardless of pressure fluctuations.



PCW-02 Washer Regulator Models

Flow Rate (± 10%) Litres/min	Flow Rate US gallons/min	Colour Code	Elastomer Washer Colour	Order Code (Part no.)
	1.0 gpm max.	Blue	White	RP/58.9170.1
	1.5 gpm max.	Green	White	RP/58.9171.1
	1.75 gpm max.	Light Blue	White	RP/58.9172.1
	2.0 gpm max.	Lilac	White	RP/58.9173.1
	2.2 gpm max.	Yellow	White	RP/58.9174.1
	2.5 gpm max.	Dark Grey	White	RP/58.9175.1
2.0 l/min		Olive	Grey	RP/58.9085.1
4.0 l/min		Dark Grey	Grey	RP/58.9086.1
5.0 l/min		Yellow	Grey	RP/58.9087.1
6.0 l/min		Black	Grey	RP/58.9088.1
7.0 l/min		Light Green	Grey	RP/58.9089.1
8.0 l/min		White	Grey	RP/58.9090.1
9.0 l/min		Orange	Grey	RP/58.9091.1
10.0 l/min		Light Blue	Grey	RP/58.9092.1
12.0 l/min		Red	Grey	RP/58.9094.1



## ROBERT PEARSON & COMPANY LTD

Post Office House, Post Office Lane  
Stockton, Warminster  
Wiltshire BA12 0SE

Telephone: (01985) 850954

Facsimile: (01985) 850112

E-Mail: [sales@robertpearson.co.uk](mailto:sales@robertpearson.co.uk)

Website: [www.robertpearson.co.uk](http://www.robertpearson.co.uk)